



AryaVille

Experience Luxury, Embrace Nature.





INDEX

Aryaville - Luxury Homestay Amidst Nature!	3
Location Map	4
Master Plan	5
ESG Compliance Overview	6
Experience Paradise: Facilities & Amenities	7-14
The AryaVille Villas - Introduction	15
Villa Design Details: TYPE ONE	16 - 27
Villa Design Details: TYPE TWO	28 - 39
Villa Exterior Specifications	40
Villa Interior Specifications	41
Villa General Specifications	42
Outer Development - Common Facilities	43-44
Contact Info & Thank you!	45
Virtual Site Visit Video Link	46
Disclaimer	47-48



LUXURY HOMESTAY AMIDST NATURE



Villas of AryaVille are an intimate collection of individual outhouses nestled in the majestic Aravali hills. Our Villas are designed to provide peace and tranquility to a community of like-minded people who believe in living close to nature.

LOCATION MAP

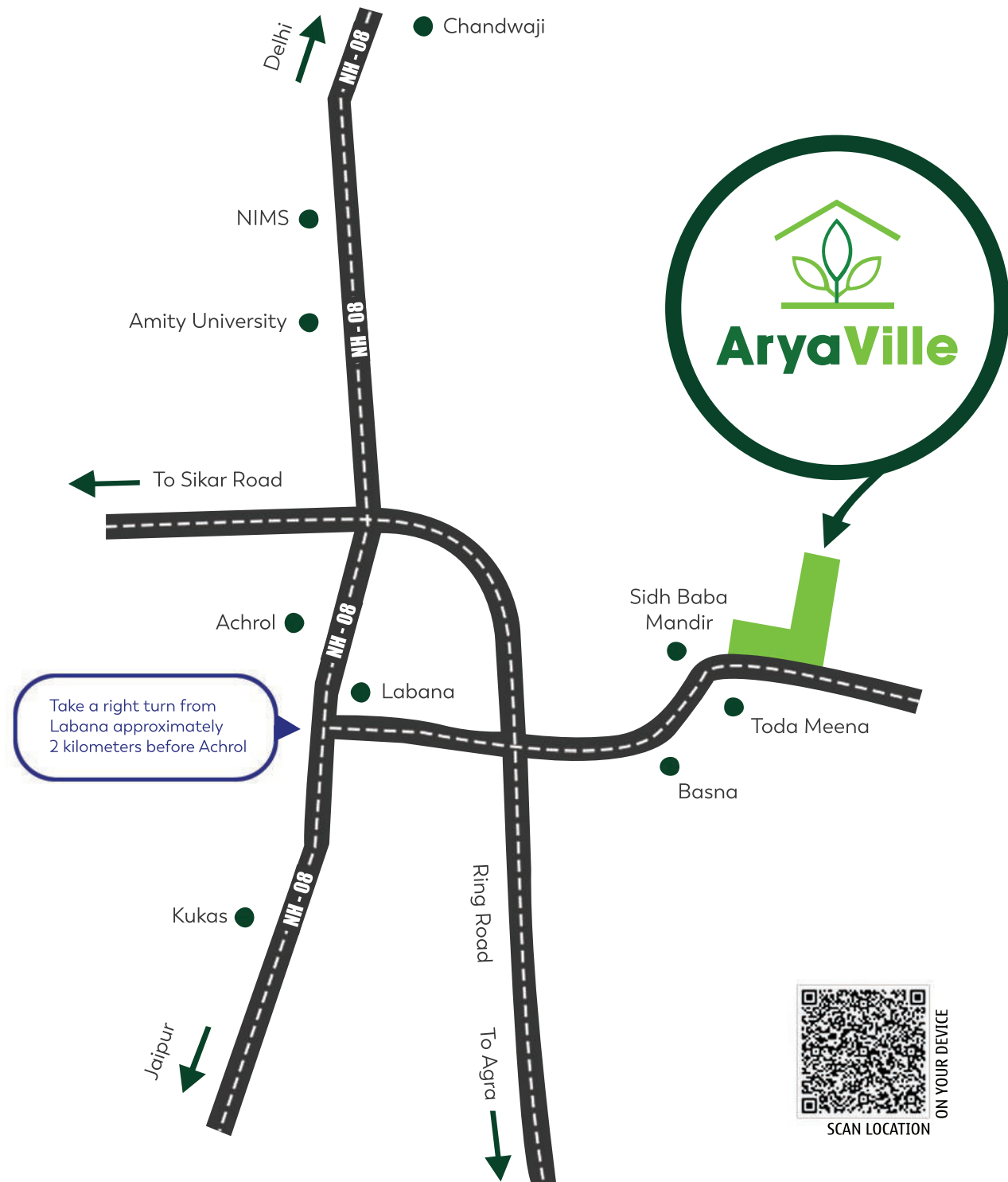
not to scale

AryaVille is located in Jamwa Ramgarh Tehsil of Jaipur district in Rajasthan (from Jaipur, heading north towards Delhi on Delhi Highway, NH-08, taking a right turn from Labana approximately 2 kilometers before Achrol, heading east of about 5-7 kilometers along the breathtaking range of the Aravalli hills is where our beautiful property is located).

The Villas of AryaVille are the pinnacle of eco-friendly luxury and sustainability. Aryaville would be approximately 5 kilometers away from the newly approved Ring Road between Agra and Delhi highway. Jaipur is the nearest town to Toda Meena which is approximately 35km away.

Distance from AryaVille:

- Jaipur International Airport - 46 KM
- Jaipur Railway Station - 39 KM
- M.I. Road - 36 KM
- Hawa Mahal - 34 KM
- Amer Fort - 26 KM
- Kukas - 20 KM





PROPOSED RESORT PLANNING COTTAGES

LAYOUT PLAN

The Eco-Resort at AryaVille is the harbinger of a new style recreation & hospitality which utilizes all go green concepts of nature, and is completely self-sustainable based on a hybrid model of 88 Premium 3BD/BT Villas & 150 Superior Studio Cottages (Suites).

Full-Facility Modern Club House & Sports Recreation Hub
(spa, party hall, amphitheater, movie theatre, swimming pool, indoor games, gymnasium, childrens play area, tennis courts, squash courts, walking and bike trails, & business center)

Multi-Cuisine Restaurants

Events & Entertainment Hub
(extravagant banquet hall, spacious lawns & water bodies)

Classic, Earthy-tones, Eco-friendly Three Bedroom Villas
(with Terrace . Gardens . VRV Air-Conditioning . Smart Home Automation) designed to blend in with natural surroundings to make homeowners feel at ease.



VILLAS

ARTISTIC IMPRESSION - indicative in nature and is for general information purpose only.



ESG



Environmental . Social . Governance



We embrace the growing importance of environmental, social, and governance (ESG) metrics that impact our corporate values and reputation from the very start and over the long term.

We are committed to ESG compliance that will help push investment towards us as a eco-sustainability company. We would be preserving, nurturing our host communities and environments, go green concepts, and operate in a way that is beneficial to the people who live in the area, and sustainable for generations of residents and travellers to come.

EXPERIENCE PARADISE

WITH THE FEEL OF A RESORT



Enjoy a clubhouse & a barnyard restaurant by the waters designed to compliment your social life without disturbing the ecosystem it surrounds. Life is sorted here!



RESTAURANT CAFE



BAR & DRINKS




**GARDEN AREA
FOR FUNCTIONS**




**YOGA &
WELLNESS**



BUSINESS CENTER



LIBRARY



GYMNASIUM



SPA & SAUNA



MUSIC & LOUNGE



KIDS PLAY AREA

INDULGE – DINE & WINE



MULTI CUISINE / CONTINENTAL



BBQ / OUTDOORS



COFFEE SHOP



BAR

EXPERIENCE NIRVANA



Nature is an overriding theme in everything AryaVille stands for. Hidden greens and design here will create a difference in landscape levels with green spaces, activity and play areas, unique features, and water bodies.

THE ARYAVILLE VILLAS



A Unique Living Experience. Enjoy nature's best without making any efforts and take your life close to nature. More than just a development, it is a balance of elements at its best.

At AryaVille, your world is protected and completely managed by our in-house team of professionals. Whether you are around or out, your lawns, plunge pools, gardens, interior and exterior areas are always ready to use round-the-clock.





VILLA DESIGN:

TYPE ONE

(in Vayu, Prithvi & Jal Lane)

Ground Floor Builtup Area: 1305.589 sq. ft.

First Floor Builtup Area: 868.258 sq. ft.

Terrace Area: 265.6 sq. ft.

TOTAL: 2289.184 sq. ft.



VILLA DESIGN: TYPE ONE | Front View



VILLA DESIGN: TYPE ONE | Front & Side View



VILLA DESIGN: TYPE ONE | Back with Side View



VILLA DESIGN: TYPE ONE | Back with Side View

VILLA DESIGN:

TYPE ONE

GROUND FLOOR: LAYOUT PLAN



S.NO	AREA NAME	FEET & INCH
1	Verandah	13'-6" X 8'-0"
2	Wide Passage	5'-3"
3	Wide Passage	3'-9"
4	Toilet	5'-9" X 9'-4½"
5	Bed Room	10'-9" X 13'-6"
6	Open Deck	16'-6" X 11'-6"
7	Kitchen	8'-0" X 11'-0"
8	Open Deck	30'-0" X 10'-0"
9	Living & Dining	22'-0" X 11'-0"
10	Bed/Activity Room	11'-4½" X 13'-10½"
11	Toilet	5'-7½" X 9'-4½"



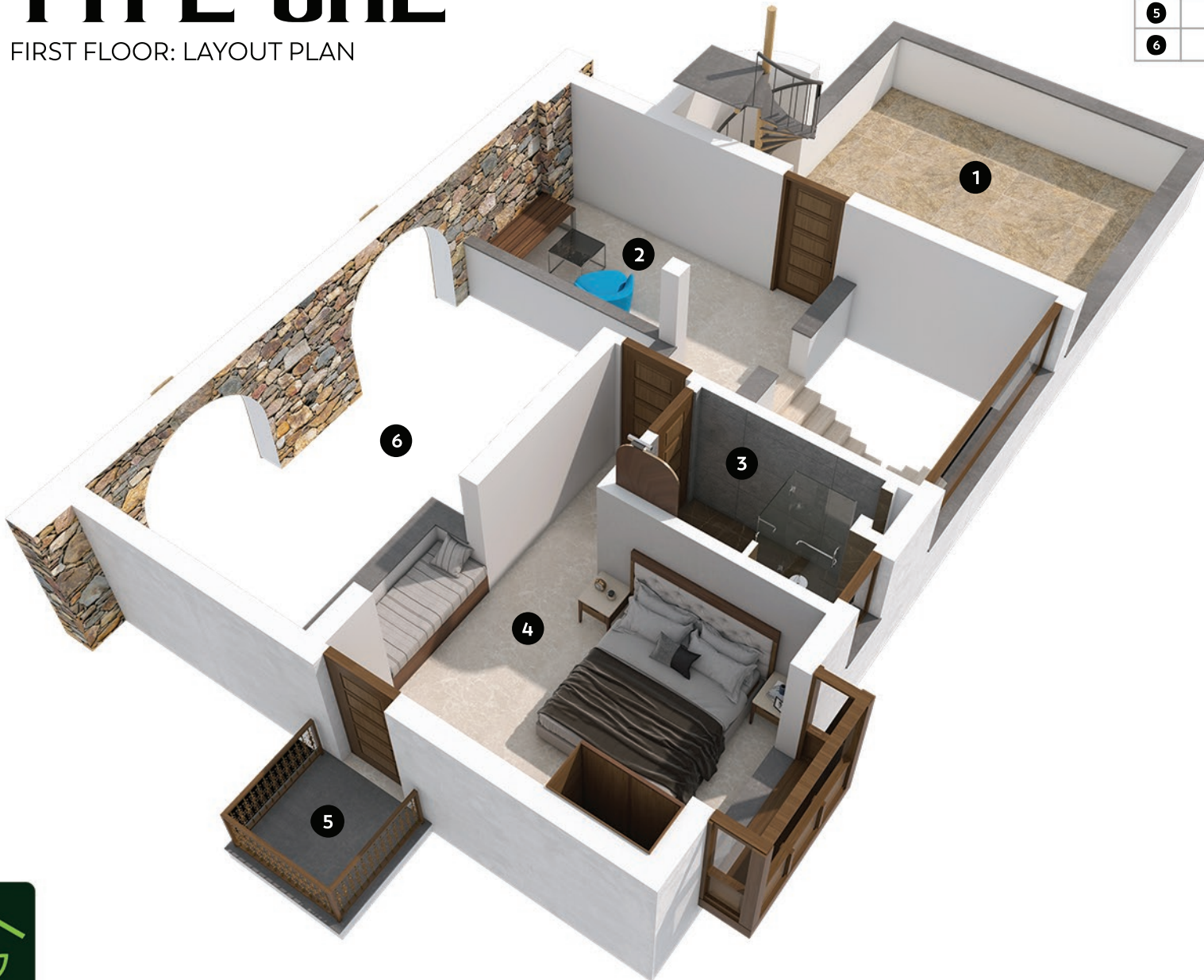
VILLA TYPE	BUILTUP AREA
ONE	2289.184 SQFT



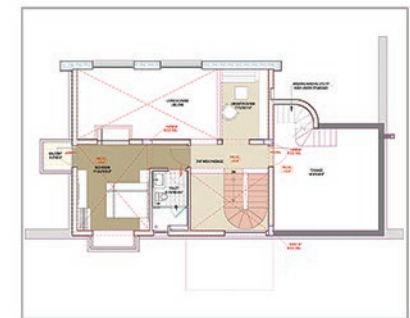
VILLA DESIGN:

TYPE ONE

FIRST FLOOR: LAYOUT PLAN



S.NO	AREA NAME	FEET & INCH
1	Lower Terrace	16'-6" X 16'-0"
2	Library/Lounge	7'-7½" X 11'-0"
3	Toilet	5'-7½" X 9'-4½"
4	Bed Room	11'-4½" X 13'-6"
5	Balcony	5'-0" X 5'-3"
6	Living & Dining Below	22'-0" X 11'-0"



VILLA TYPE	BUILTUP AREA
ONE	2289.184 SQFT





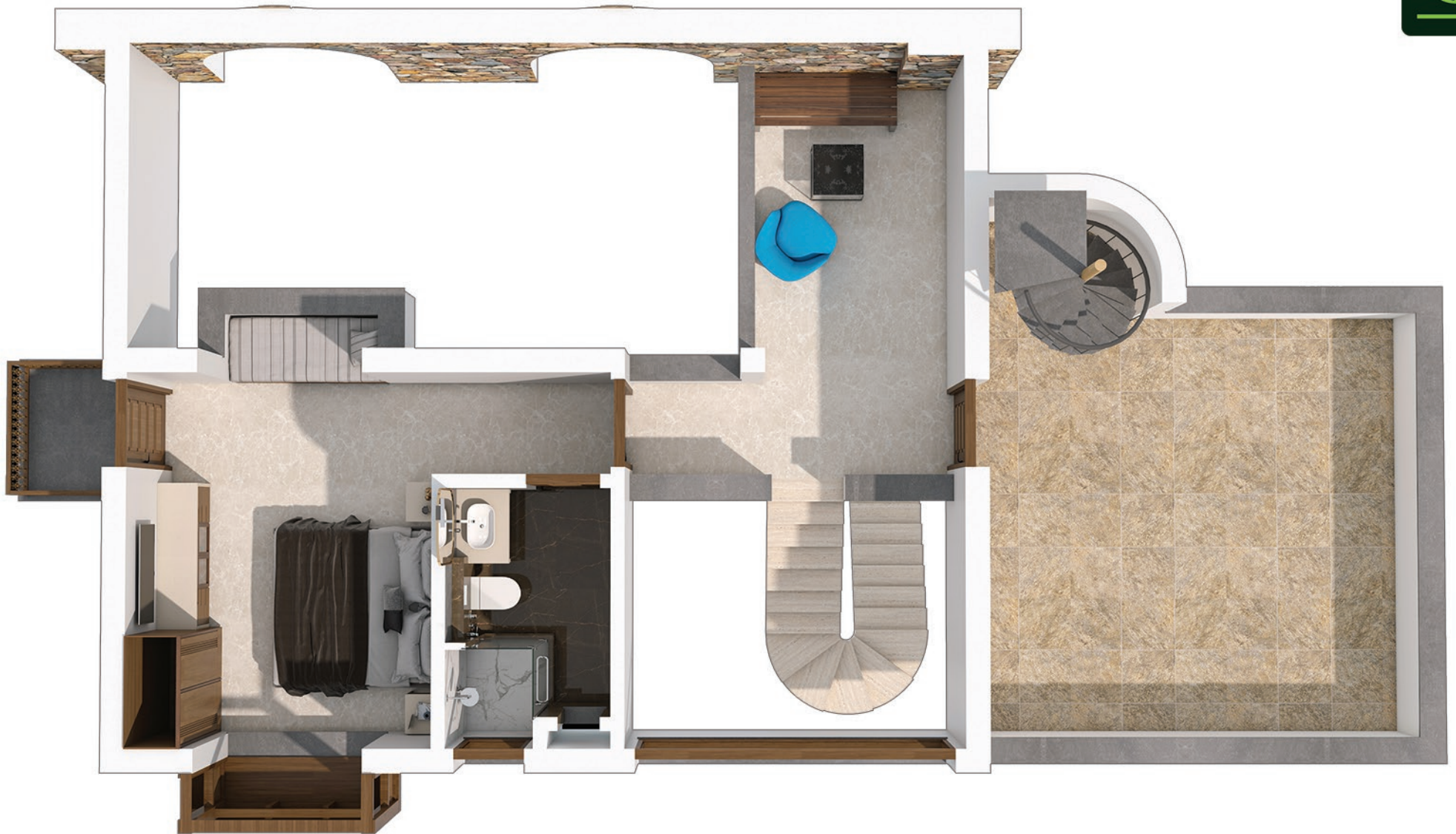
VILLA DESIGN: TYPE ONE
Ground Floor - Aerial View | Back to Front Orientation



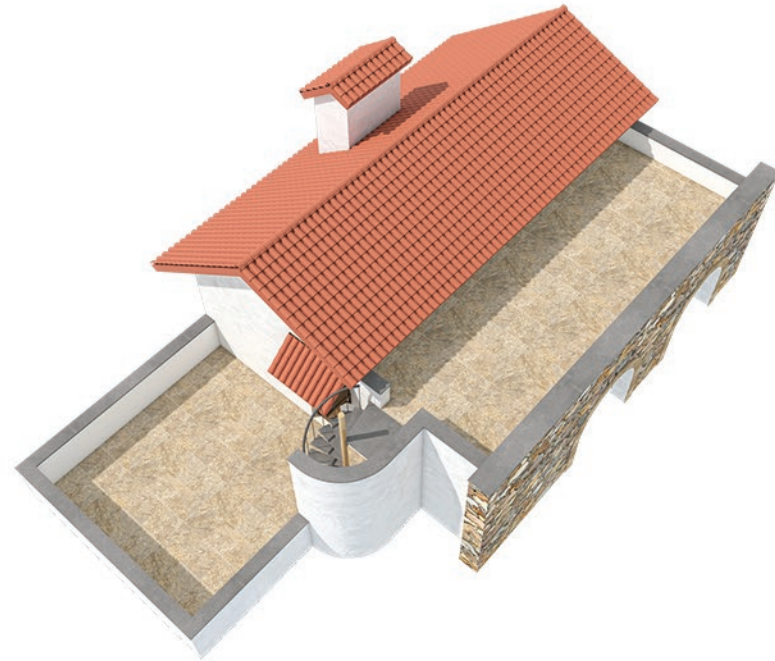
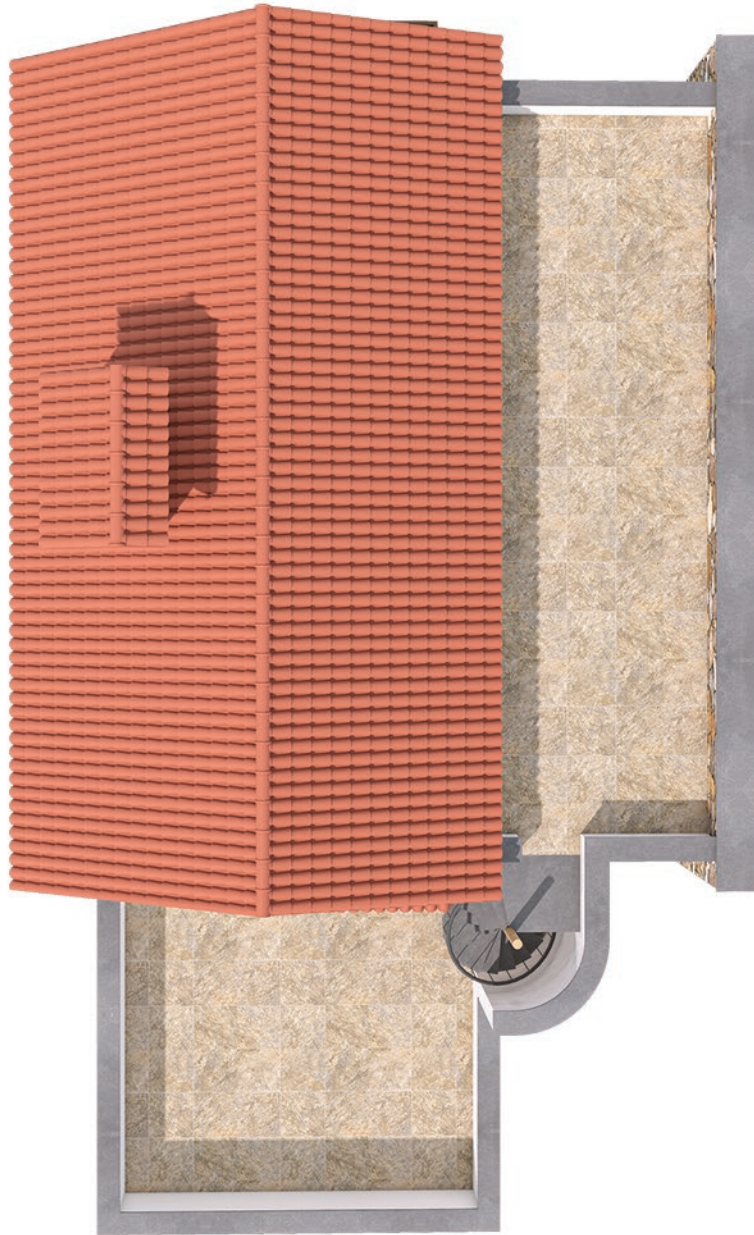
VILLA DESIGN: TYPE ONE
First Floor - Aerial View | Back to Front Orientation



VILLA DESIGN: TYPE ONE
Ground Floor - Aerial View | Front to Back



VILLA DESIGN: TYPE ONE
First Floor - Aerial View | Front to Back



VILLA DESIGN: TYPE ONE
Terrace - Aerial View | Front to Back and Back to Front Orientations



VILLA DESIGN:

TYPE TWO

(in Aakash, Jal, Prakash & Prithvi Lanes)

Ground Floor Builtup Area: 1255 sq. ft.

First Floor Builtup Area: 642 sq. ft.

Terrace Area: 223.31 sq. ft.

TOTAL: 2123.965 sq. ft.



VILLA DESIGN: TYPE TWO | Front View



VILLA DESIGN: TYPE TWO | Front & Side View



VILLA DESIGN: TYPE TWO | Back with Side View



VILLA DESIGN: TYPE TWO | Back View

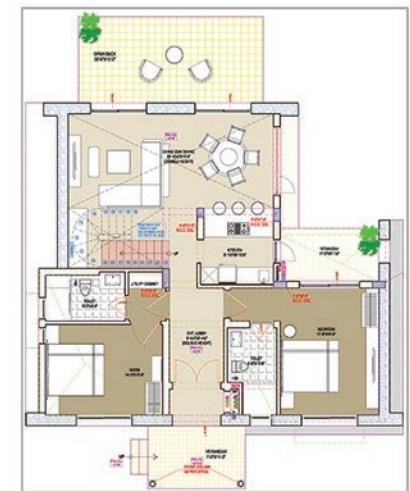
VILLA DESIGN:

TYPE TWO

GROUND FLOOR: LAYOUT PLAN



S.NO	AREA NAME	FEET & INCH
1	Verandah	7'-3" X 11'-3"
2	Entrance Lobby	6'-4½" X 6'-4½"
3	Toilet	5'-9" X 10'-6"
4	Bed Room	11'-6" X 14'-9"
5	Verandah	11'-6" X 6'-1½"
6	Kitchen	8'-1½" X 8'-10½"
7	Living & Dining	23'-10½" X 11'-0"
8	Toilet	9'-3" X 5'-9"
9	Bed Room	14'-0" X 10'-6"
10	Open Deck	30'-0" X 10'-0"



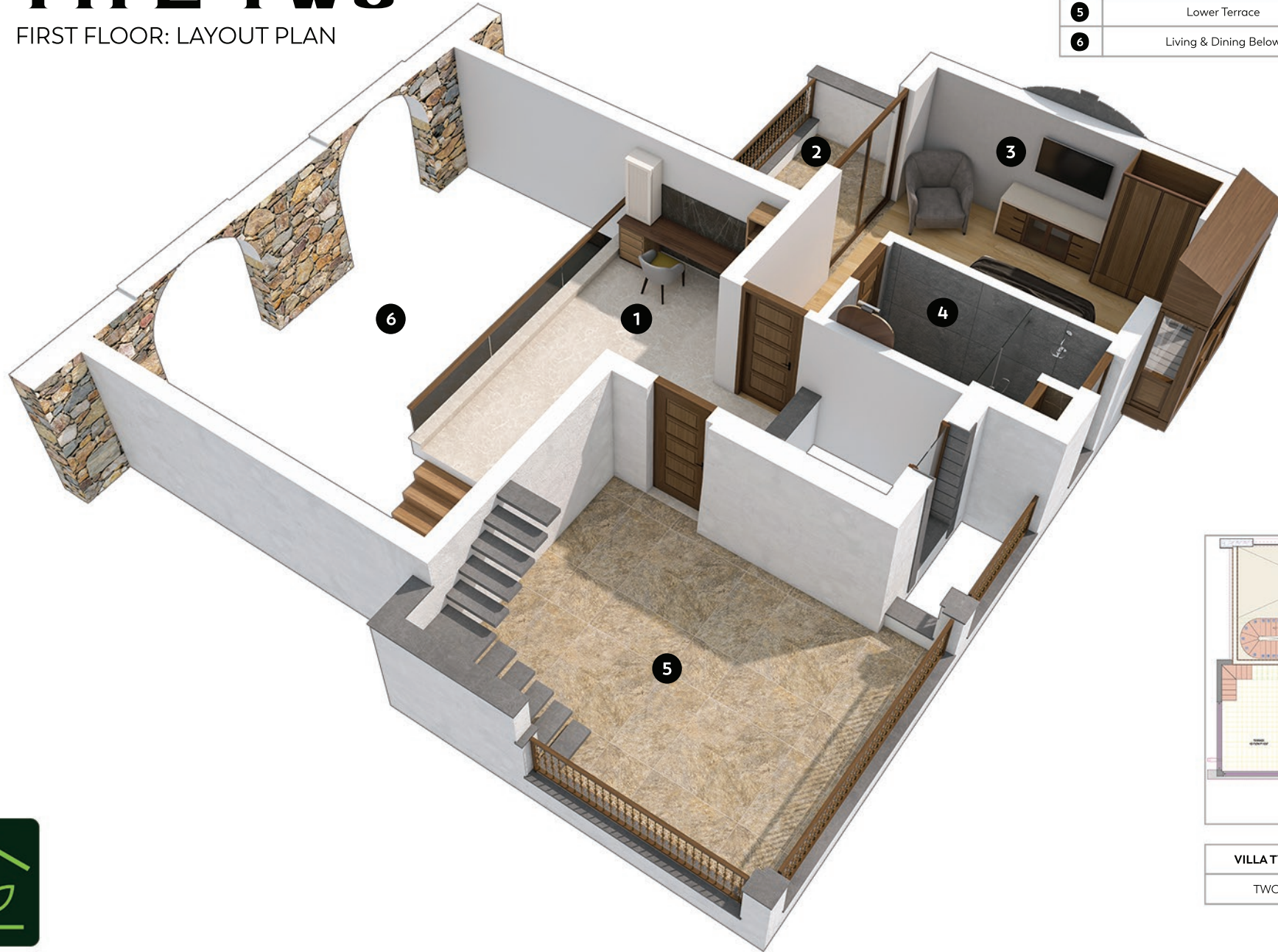
VILLA TYPE	BUILTUP AREA
TWO	2123.965 SQFT



VILLA DESIGN:

TYPE TWO

FIRST FLOOR: LAYOUT PLAN



S.NO	AREA NAME	FEET & INCH
1	Study	16'-0" X 8'-6"
2	Balcony	11'-6" X 5'-4½"
3	Bed Room	11'-6" X 16'-4½"
4	Toilet	5'-9" X 11'-6"
5	Lower Terrace	13'-7½" X 17'-10½"
6	Living & Dining Below	23'-10½" X 11'-0"

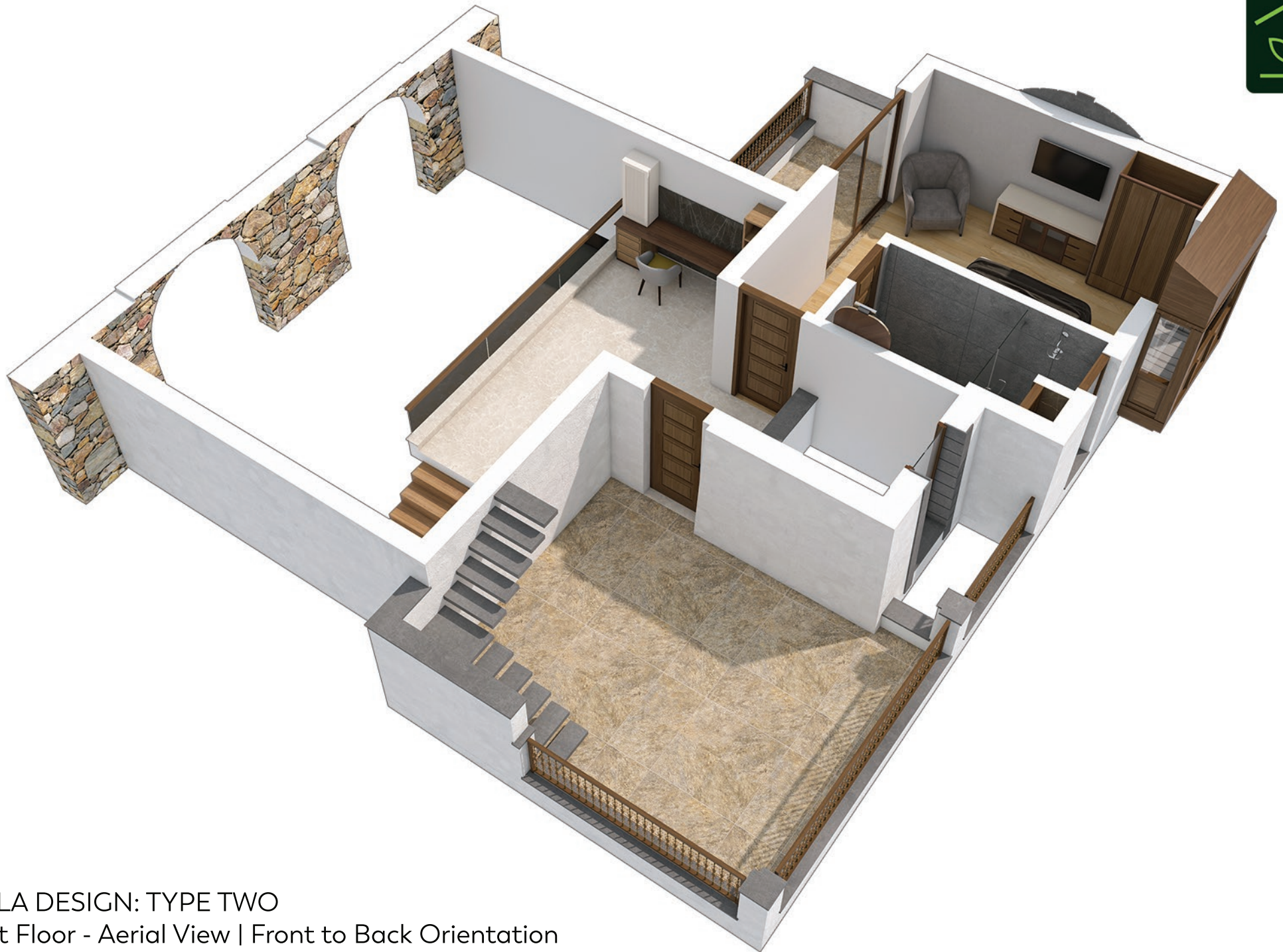


VILLA TYPE	BUILTUP AREA
TWO	2123.965 SQFT





VILLA DESIGN: TYPE TWO
Ground Floor - Aerial View | Back to Front Orientation



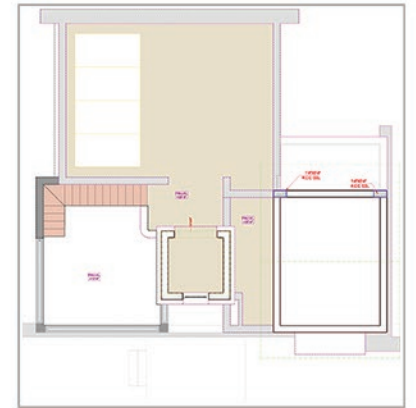
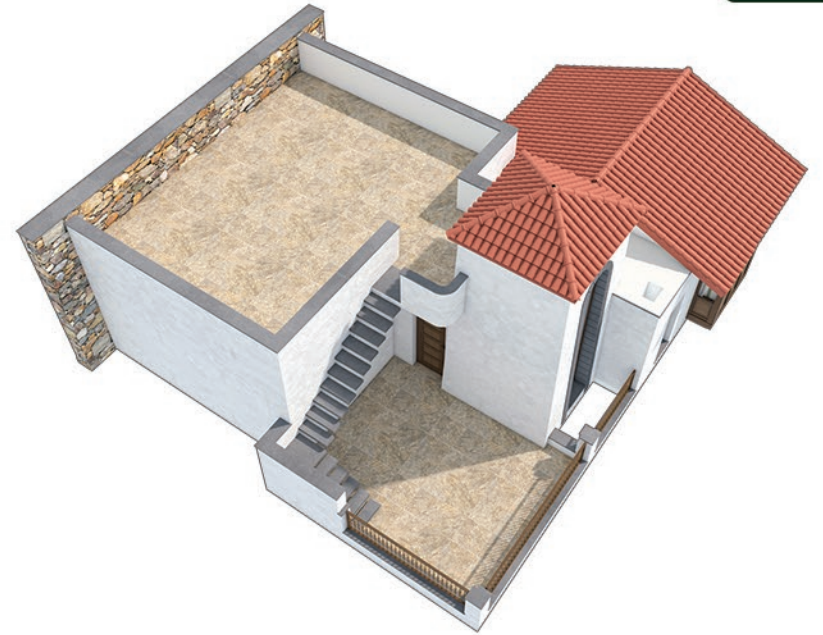
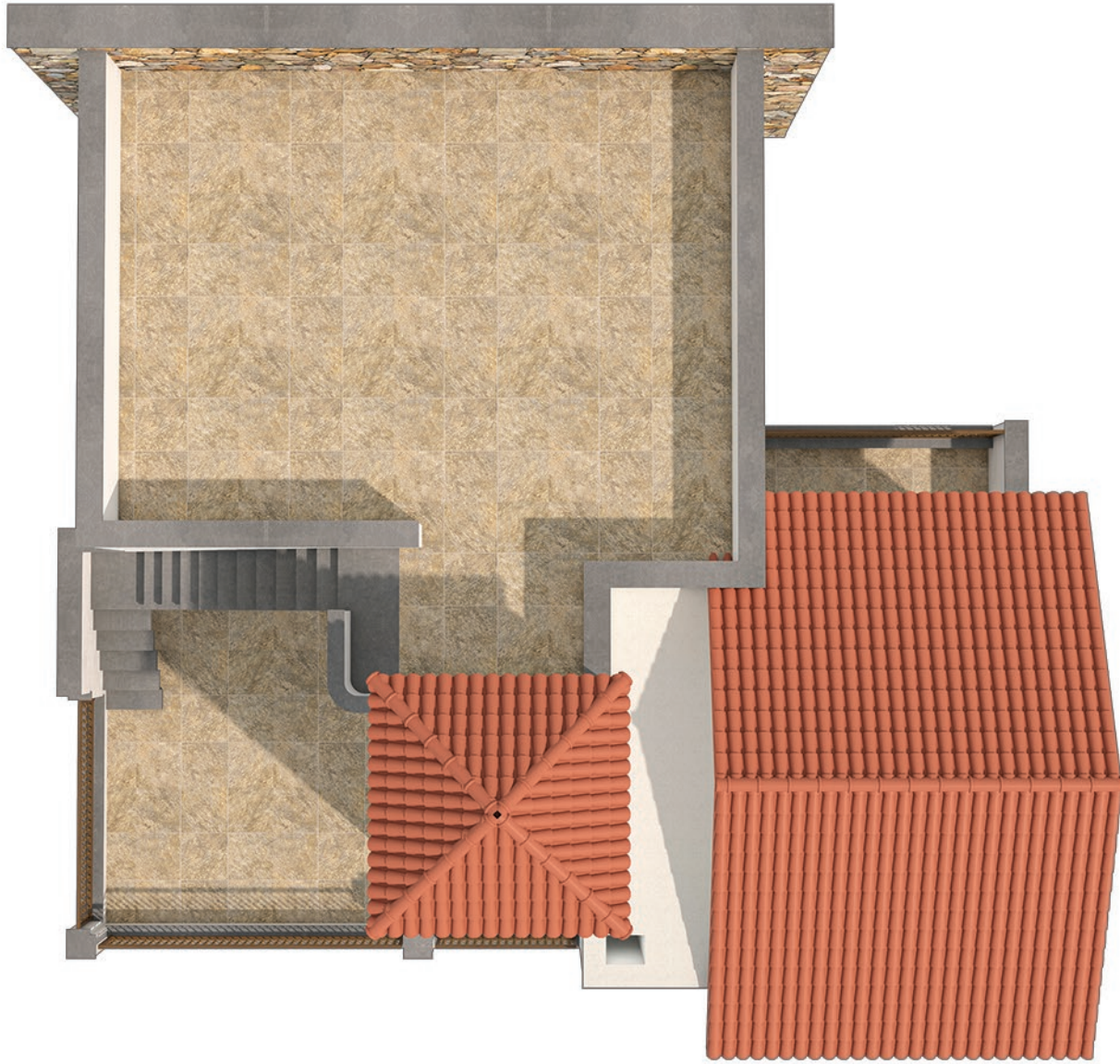
VILLA DESIGN: TYPE TWO
First Floor - Aerial View | Front to Back Orientation



VILLA DESIGN: TYPE TWO
Ground Floor - Aerial View | Front to Back



VILLA DESIGN: TYPE TWO
First Floor - Aerial View | Front to Back



VILLA DESIGN: TYPE TWO
Terrace - Aerial View | Front to Back, Back to Front Orientations



VILLA EXTERIOR SPECIFICATIONS

ARRIVAL AT YOUR VILLA

- Of course, when you have hills, you must have a valley. There is no doubt that living in your own Villa at AryaVille will have its distinctive pleasures, besides the immersive experience of living among the trees, listening to the whistles of the wind passing through the luscious green driveway to evoke your visual as well as auditory senses.
- Vibrant shrubs and flower bed plantation along the stone-paved driveway
- Manicured, lush green lawn, adorned by a variety of shrubs and trees

VARIETY OF GARDENS

- Sustainable garden – one that will create a healthy environment for the plants and life within it, and your own health.
- Aroma garden with a variety of local plants simply for your enjoyment and well-being, all around the perimeter

SIT-OUT SPACES

- Multiple semi-covered outdoor living/family spaces with seating areas to enjoy the property & landscape
- Multiple machans' raised on platforms high above the forest floor with a panoramic views of the evergreen nature surroundings.

OTHER FEATURES

- Green plantation belt with various species of plants, shrubs, flowering and fruit trees running all around the periphery of the site
- The villas are well-furnished for the guests
- Multiple house-keeping stations to provide impeccable services and unmatched hospitality

BOUNDARY WALL SPECIFICATIONS

- Wire fencing with decorative tall bamboo tree-like plants and shrubs for additional greenery and privacy, plus to prevent unwanted wildlife from entering

VILLA INTERIOR SPECIFICATIONS

The interior of each villas would be built keeping an ethnic ethos of nature in mind offering all the necessary amenities for a home away from home living experience amidst the surrounding beautiful mountains.

Each villa would have two floors (ground + first floor) with terrace that comes with:

- 3 Bedrooms
- Living Room
- Dining Room
- Kitchen
- Lounge
- Multiple Toilets
- Library Area
- En Suite Bathroom
- Double Height Verandah
- Access to Garden
- Plunge Pool (optional and extra*)
- Gazibo (optional and extra*)
- Fire-pit/BBQ (optional and extra*)





VILLA GENERAL SPECIFICATIONS

Contemporary Mediterranean-style facade with red tile roofs, stucco exteriors, lush green gardens and ornate archways are meant to be a relaxing retreat that connects you with nature. Featuring large windows and doors that access patios, terraces, or balconies, our mediterranean-style villas are designed to blend in with their natural surroundings and make homeowners feel at ease.

COMMON FACILITIES

- CCTV at entrance
- Garbage collection point

STRUCTURE & SERVICES

- Earthquake resistant structure
- Managed Services - centralized grouped location of services installation to ensure easy maintenance

ELECTRICALS

- High side electrical equipment - transformer, panels etc. of requisite designed capacity
- Electrical fittings & concealed copper wiring in PVC conduit
- Separate meter for lighting in common areas
- 16 amps sockets for geysers in toilets and 25 amps socket for air conditioners in all bedrooms
- Adequate nos. of 6 amps sockets & 16 amps sockets in kitchen
- Adequate nos. of 16 amps plug sockets in each room. Multiple sockets in the living room for connections to TV, stereo and other equipment.
- Main door-bell at entry



managed services

VILLA COMMON FACILITIES

The commitment to the environment is clear at AryaVille. With sustainability as its heart, and warmth as its soul, the villas would provide a rejuvenating experience with best of its services and hospitality.

LUXURY OF SUSTAINABILITY

- Ample daylight, ventilation & cross ventilation
- Effective irrigation system & water treatment system
- Exquisite landscape with gardens for children and residents and native species - increase bio-diversity
- Ample parking for residents and visitors with provision of electric charging
- Water smart low flow plumbing fixtures
- Energy saving appliances and equipment
- Onsite renewable energy - solar power installation
- LED lighting in common areas
- Zero-water discharge
- Rainwater storage & harvesting system

OUTDOOR RECREATION SPACES

Living in harmony with nature transforms your life in more ways than you can imagine. The difference lies in the details - the air you breathe in the city is polluted and harmful, while the breeze in the countryside is pure and favorable. The wonderful green lushness of the land at AryaVille is complemented by the cool blue waters that run through it. The water you drink and the sights you lay your eyes on, all contribute to the betterment of your mental health.

Spending even a day in nature's lap relaxes your body, unwinds the mind, and uplifts the spirit. The elements of nature are a major inspiration offering its residents a surreal yet practical lifestyle experience.



RESORT COMMON FACILITIES

CLUB

The club offers panoramic view of the surrounding serene spaces. Club amenities include but are not limited to multi-cuisine restaurants, cafes, bars, nightclub, garden area for functions, yoga & wellness center, business center, library, gymnasium, spa & sauna, music lounge and kids play area. A lavish game room featuring:

- Pool table
- Poker table
- Carrom table
- Table tennis
- Foosball table
- Board games
- Karaoke and jukebox
- Box Cricket
- Thematic kids activity & play area

TATWA VILLAGE - BARN RESTAURANT

Embedded between a natural pond and lush green landscape would be our popular barn-style restaurant with both indoor and waterside seating areas for a peaceful dining experience amidst nature.

GIFT SHOPS

Located adjacent to the Tatwa village barn restaurant would be multiple gifts shops catering to the basics & boutiques for those who just love shopping!



THANK YOU!



AryaVille

+91 7665212212 | +91 8696916912

 /theAryaVille  /@theAryaVille  /theAryaVille



Architect, Interior Design
& Structural Consultants



Mechanical, Electrical, HVAC,
Plumbing and Fire Consultants



Landscape Architect Consultants

TAP TO VIEW VIRTUAL SITE VISIT





Harbinger Recreations LLP Document Disclaimer:

Images depicted in this document are not actual project images and are strictly for representational purposes only. The artist's impression of the entire property comprehensively, including the elevation, external spaces, common amenities, internal spaces, villas, cottages, clubhouse, landscaping, lobby, gym, kids' area, swimming pool, party areas are strictly for representational purposes only. Any references to specific amenities, designs, or developments are conceptual only. Harbinger Recreations LLP makes no representations or warranties, either express or implied, regarding the accuracy, completeness, or reliability of the information presented in the layout plan/masterplan. The company shall not be held liable for any loss, damage, or inconvenience arising from the use of, or reliance on, the information contained in the layout plan/masterplan.

The renders and other artistic imagery used in this entire document are an artist's impression of possible appearance and is/are not absolute and/or complete, but only a suggestive reference. The colours, shades of walls, tiles, etc. are for representational purposes and may vary in planning and designing and upon actual construction. All features, landscaping, fixtures, fittings, goods, accessories, and furniture reflected/displayed on the various images are strictly for illustrative and display purposes only and are not part of the standard final amenities and finishes. The rendering for internal spaces is to only act as an example of suggested space management and possible utilization of the space, and in no manner should be construed as part of the final product to be provided as per the agreement for sale/perpetual lease deed (if any).

By accessing or utilizing the layout plan/masterplan, you acknowledge and agree that Harbinger Recreations LLP is not responsible for any discrepancies, errors, or omissions that may exist within the document. You further understand that the masterplan is subject to modification, revision, or withdrawal at the sole discretion of Harbinger Recreations LLP without prior notice.

The images/views have been modified/enhanced for visual, illustrative, and creative purposes. All features, fixtures, fittings, goods, accessories, and furniture reflected/displayed in the villas or cottages, or any part of the resort layout plan/masterplan are strictly for display/demonstration purposes only.

All specifications of the villas and cottages shall be as per the agreement for sale between the parties.

Cottages & Villa Unit Plans indicate that the plans are not to scale and for demonstration purposes. The furniture/fixtures etc. shown in the image are only indicative and representational (not actual) in nature and are only for the purpose of illustrating /reflecting a possible layout and do not form a part of the standard specifications, amenities, services, etc. to be provided in respect of the flat.

Floor Plans depicted are not to scale. Resort (Villas & Cottages) Layouts as presently proposed and/or approved, maybe subject to marginal changes/revisions by the concerned authorities in consonance with the laws and regulations applicable from time to time. The amenities/specifications, features & landscaping mentioned in the agreement for sale shall be considered as final based on approved plans for the project/phase/property.

All information in this document is prepared and issued in good faith and for guidance only. It does not constitute part of an offer or contract. The recipient or user is responsible to evaluate the accuracy, completeness, and usefulness of any opinions, advice, services, or other information provided. You may seek the opinion of your own legal or tax advisor or real estate expert. For further information on the registered projects please email partner@aryaville.com and/or contact +91 8005891371



In no event shall Harbinger Recreations LLP., its directors, partners, officers, employees, or affiliates be liable for any loss, damage, errors; direct, indirect, incidental, special, or consequential damages arising out of the use of the layout plan/masterplan or any reliance placed upon its contents or incidental suffered or incurred by any person/s or due to any use and/or inability to use this presentation, site or information or its links, hyperlinks. While all efforts have been made to provide correct information however, and the same is not service or assistance of any nature, or an offer to provide the same. Any recipient or user of any information or material from this presentation, the site may avail of the same entirely at his/her own risk as to costs and consequences, thereof.

This document, presented herewith, supersedes all prior presentations, documents, or materials distributed or made available by Harbinger Recreations LLP. It serves as the most updated and accurate information available to date, and any previous versions should be considered null and void.

The information contained in this document is provided for general informational purposes only and is subject to change without notice. Harbinger Recreations LLP. makes no representations or warranties of any kind, express or implied, regarding the completeness, accuracy, reliability, or suitability of the information herein. Therefore, any reliance placed on this document is at your own risk.

By accessing or utilizing this document, you acknowledge and agree that Harbinger Recreations LLP. shall not be liable for any loss, damage, or inconvenience arising from the use of, or reliance on, the information provided herein. Furthermore, Harbinger Recreations LLP. does not guarantee the continued availability of the information contained in this document, as it may be subject to subsequent updates, modifications, or amendments.

All users are strongly encouraged to consult with appropriate representatives of Harbinger Recreations LLP. to ensure the most accurate and up-to-date information is obtained for accurate and updated information regarding the resort's development plans and regulations. Any decisions made based on this document should be independently verified and cross-checked with current representatives to confirm the accuracy and applicability of the information provided.

Please be advised that Harbinger Recreations LLP. reserves the right to revise, amend, or make changes to the information provided in this document at any time without prior notice.

By continuing to access or use the layout plan/masterplan, you agree to be bound by the terms of this disclaimer.

Logos, brands, and images are the property of their respective owners. Copyright © 2022 - 2024 Harbinger Recreations LLP. All Rights Reserved.